

PRESENTING



# THE GALE

AT GODREJ PARK WORLD

# THE GODREJ LEGACY

Godrej Properties brings the Godrej Group's philosophy of innovation, sustainability, and excellence to the real estate industry. Each of Godrej Properties' developments combines a 127-year legacy of excellence and trust, with a commitment to cutting-edge design and technology.



# AWARDS & RECOGNITION

Giving you the best makes us the best. It's all thanks to you that Godrej Properties Limited has won over 250 awards and recognitions in recent years.

 Integrated Township Project  
of the Year   
Realty+ Excellence Awards,  
2023

 Best Design Project   
Realty+, 2022

 Best Interior Design   
Realty+, 2022

 Plotted Development  
of the Year   
Realty+ Conclave Award,  
2022

 Lopez Design for  
Energizing - Central Park   
India's Best  
Design Awards, 2021

 Architectural Design  
of the Year   
Realty+ Conclave Award,  
2021

 Best Interior Design   
Realty+ Conclave Award,  
2021



 National Brand Leaders   
Track2Realty BrandXReport,  
2019-20

 Porter Prize: For Leveraging  
Unique Activities   
Porter Prize, 2019

 Real Estate Company  
of the Year   
Construction Week  
Awards, 2019

 India's Top Builders  
Award   
Construction World Architect  
and Builder (CWAB) Awards,  
2018

 Wealth Creator Among  
The Next 500 Companies   
Fortune India

 Ranked #1 Globally for  
a Third Consecutive Year   
GRESB (Global Real Estate  
Sustainability Benchmark)

# CREATING A FUTURE FULL OF POSSIBILITIES IN AN ICONIC LOCATION

With growing job opportunities, rapid development of infrastructure, and proximity to IT Hubs, Hinjewadi is a preferred destination for many. Being close to the city, it enjoys a continuous stream of investments and promises rapid growth in the future.



# BUILDING PRECIOUS DREAMS, ONE HOME AT A TIME



## UNDRI

- GODREJ PRANA
- GODREJ GREENS
- GODREJ HORIZON

## KESHAV NAGAR

- GODREJ INFINITY
- GODREJ REJUVE

## MAMURDI

- GODREJ FOREST GROVE
- GODREJ PARK GREENS
- GODREJ NURTURE
- GODREJ WOOD PARK
- GODREJ CARNIVAL
- GODREJ SERENE

## MAHALUNGE

- GODREJ HILLSIDE, GODREJ HILLSIDE 2 & GODREJ HILLSIDE 3
- GODREJ MEADOWS & GODREJ MEADOWS 2
- GODREJ GREEN COVE
- GODREJ GREEN VISTAS
- GODREJ HILL RETREAT & GODREJ HILL RETREAT 2
- GODREJ RIVER ROYALE

## HINJEWADI

- GODREJ WOODSVILLE
- GODREJ ELEMENTS
- GODREJ 24
- GODREJ EDEN ESTATE PHASE 1 & 2

## MANJARI

- GODREJ SKY GREENS PHASE 1 & 2
- GODREJ PARKRIDGE
- GODREJ BOULEVARD
- GODREJ URBAN RETREAT

## PIMPRI

- GODREJ EMERALD WATERS

Presence in Pune

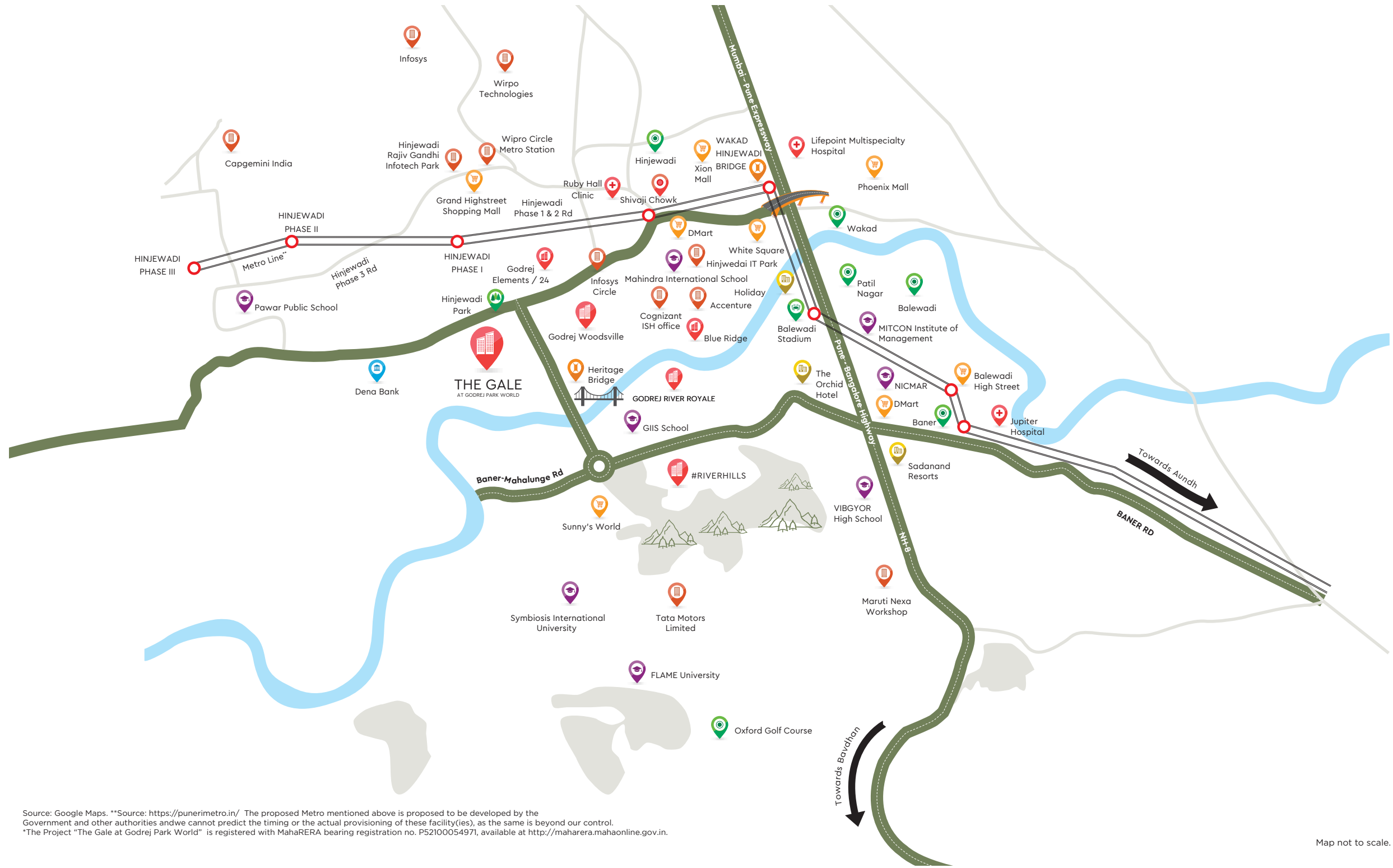


15,75,000+ m<sup>2</sup> sold



16,000+ happy families

# LOCATION MAP



Source: Google Maps. \*\*Source: <https://punerimetro.in/> The proposed Metro mentioned above is proposed to be developed by the Government and other authorities and we cannot predict the timing or the actual provisioning of these facility(ies), as the same is beyond our control. \*The Project "The Gale at Godrej Park World" is registered with MahaRERA bearing registration no. P52100054971, available at <http://maharera.mahaonline.gov.in>.

# ICONIC LOCATION FOR THE PRECIOUS FEW

Hinjewadi promises robust growth and development and enjoys being the preferred neighbourhood for many. It is the perfect location which is far from the chaos while having all the advantages of the city life.



Proximity to IT  
Hubs



Robust Connectivity to Major Hotspots of  
the City and Nearby Cities



Advanced Social  
Infrastructure

# WHERE GROWTH GATHERS PACE

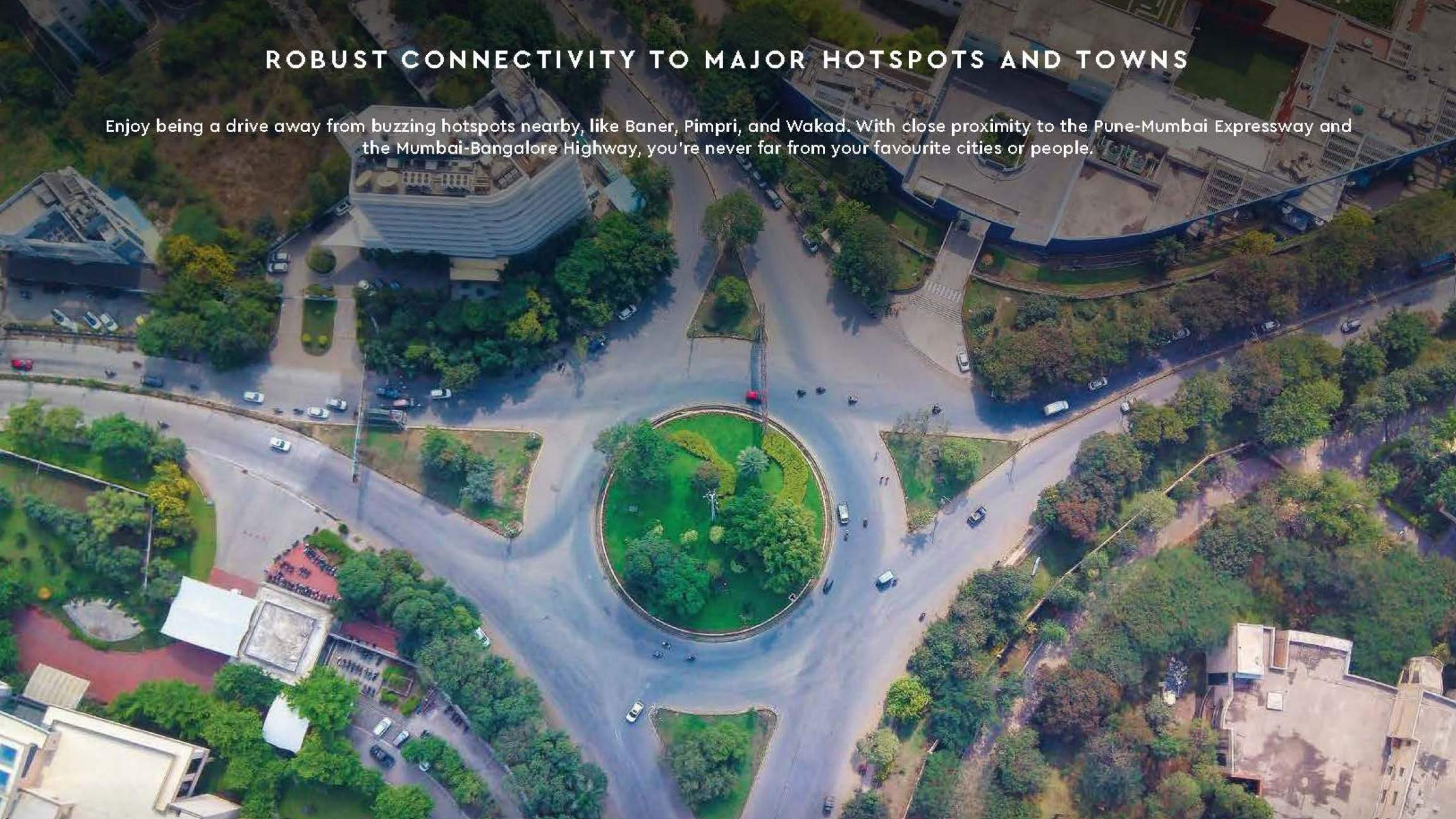
Proximity to the Rajiv Gandhi Infotech Park serves as a golden opportunity to be close to some of the leading IT companies from across the world, and the immense opportunities they offer.





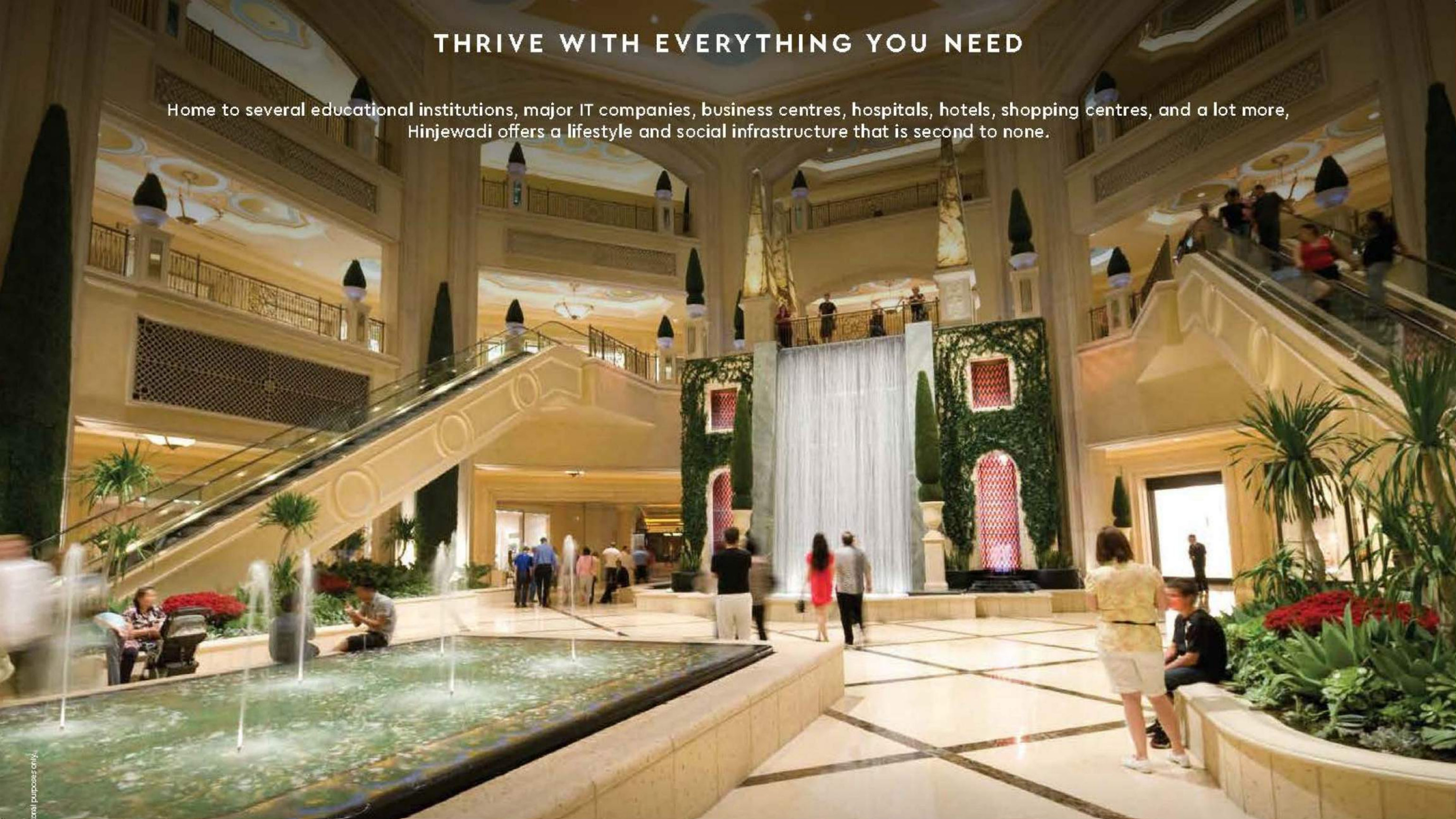
# ROBUST CONNECTIVITY TO MAJOR HOTSPOTS AND TOWNS

Enjoy being a drive away from buzzing hotspots nearby, like Baner, Pimpri, and Wakad. With close proximity to the Pune-Mumbai Expressway and the Mumbai-Bangalore Highway, you're never far from your favourite cities or people.



# THRIVE WITH EVERYTHING YOU NEED

Home to several educational institutions, major IT companies, business centres, hospitals, hotels, shopping centres, and a lot more, Hinjewadi offers a lifestyle and social infrastructure that is second to none.



PRESENTING



GODREJ PARK WORLD

HINJEWADI PHASE 1

# PILLARS OF GODREJ PARK WORLD AT HINJEWADI PHASE 1



12+ ACRES OF  
CENTRAL GREENS  
& PLAYGROUNDS



MASTER  
CLUBHOUSE



PREMIUM RETAIL  
SPACES



SCHOOL &  
COMMERCIAL  
OFFICES  
NEXT DOOR



VILLA  
PLOTING

BEHOLD AN AWE-INSPIRING MULTI-ACRE DEVELOPMENT WHERE YOU CAN LIVE AMIDST 12+ ACRES OF CENTRAL GREENS & PLAYGROUNDS.



AI Generated Image

#LungsOfPune

Artist's impression and not actual site image. This is for representational purposes, indicating the amenity / development and not the actual delivery.

**WHERE PLAYS HAPPEN IN MULTIPLE WAYS, AMIDST  
12+ ACRES OF CENTRAL GREENS & PLAYGROUNDS.**



AI Generated Image

**KIDS' PLAY AREA**



AI Generated Image

**MULTI-PURPOSE FIELDS**



AI Generated Image

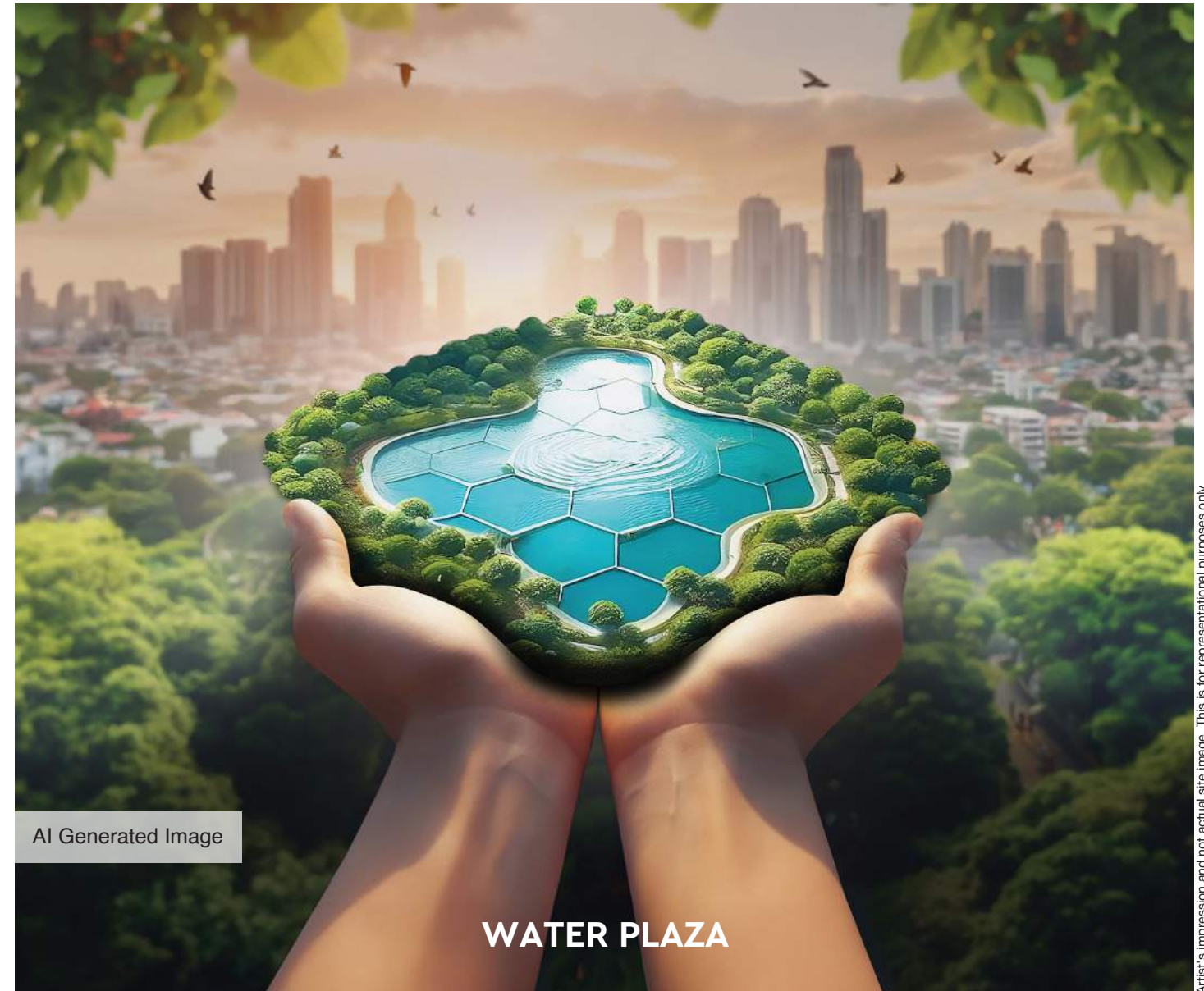
**AMPHITHEATRE**

**WHERE GOOD TIMES ALWAYS FLOW,  
AMIDST 12+ ACRES OF CENTRAL GREENS & PLAYGROUNDS.**



AI Generated Image

**CAMPING BY THE BROOK**



AI Generated Image

**WATER PLAZA**

**WHERE OUR AMENITIES COMPLEMENT YOUR DAILY REGIME  
AMIDST 12+ ACRES OF CENTRAL GREENS & PLAYGROUNDS.**



AI Generated Image

**MASTER CLUBHOUSE \***

\* Kindly be advised that the access to Master Clubhouse will be available exclusively through paid membership only.



AI Generated Image

**SPORTS HUB \***

\* Kindly be advised that the access to Sports Hub will be available exclusively through paid membership only.



AI Generated Image

**BARBEQUE AREA**

Artist's impression and not actual site image. This is for representational purposes only.

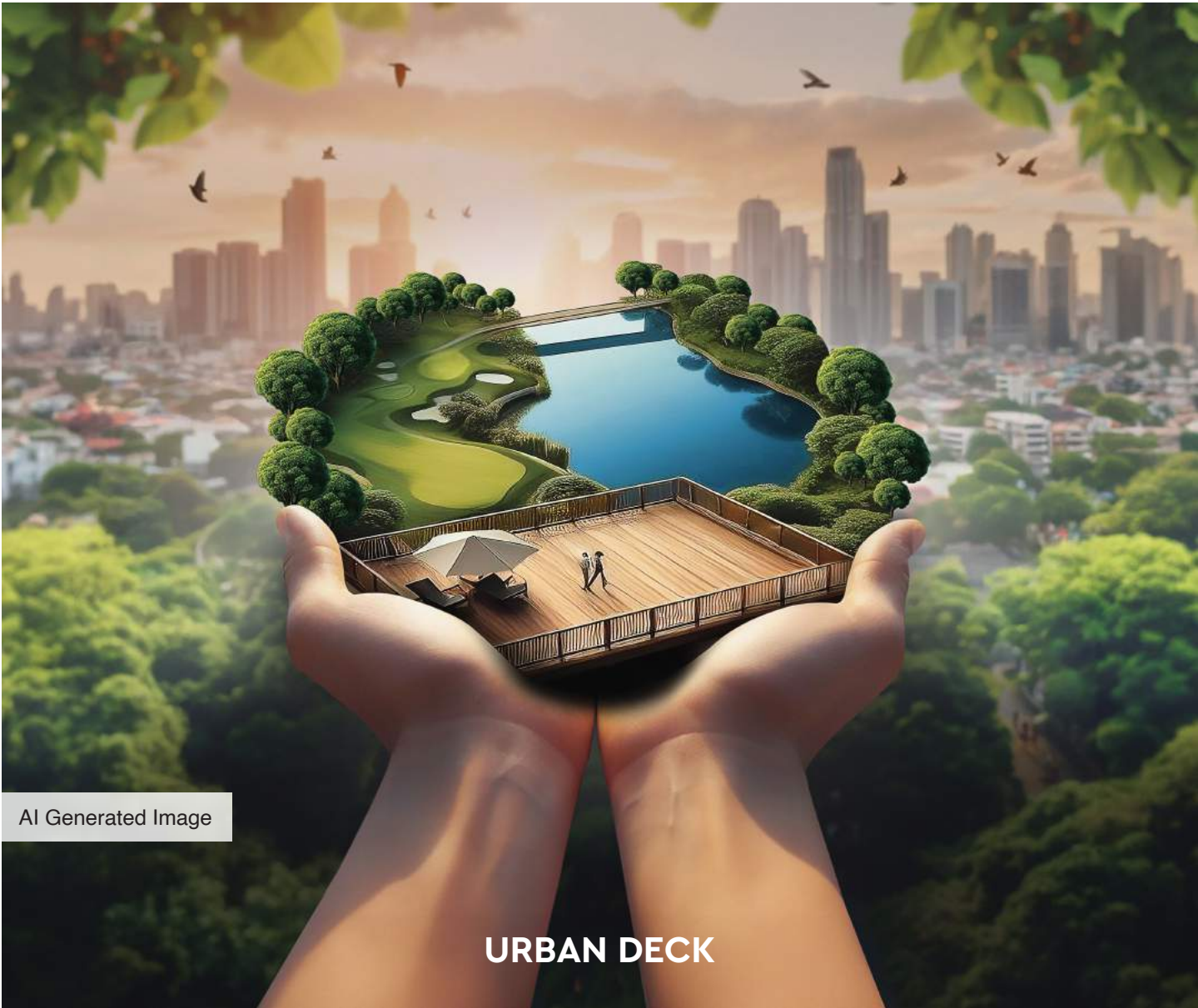


**WHERE YOU CAN WORK HARD AND RELAX HARDER AMIDST  
12+ ACRES OF CENTRAL GREENS & PLAYGROUNDS.**



AI Generated Image

**OUTDOOR WORKING PODS**



AI Generated Image

**URBAN DECK**

Artist's impression and not actual site image. This is for representational purposes only.

**WHERE GOLDEN YEARS MEET A REFRESHING LIFESTYLE  
AMIDST 12+ ACRES OF CENTRAL GREENS & PLAYGROUNDS.**



**6.2+ ACRES OF  
RESORT DISTRICT  
AT  
GODREJ PARK WORLD**

PRESENTING



# THE GALE

AT GODREJ PARK WORLD



Artist's impression and not actual site image. This is for representational purposes only.



Artist's impression and not actual site image. This is for representational purposes only.

# PROJECT HIGHLIGHTS



21,000+ SQ. FT.  
PALM RESORT  
CLUBHOUSE



PREMIUM  
RETAIL SPACES



2.5+ ACRES  
LUSH GREENERY



12+ ACRES OF  
CENTRAL GREENS  
& PLAYGROUNDS

# MASTER LAYOUT PLAN

## Ground Level

- 01 Entrance Plaza
- 02 Security Cabin
- 03 Tower Drop off on Ground floor
- 04 Outdoor Gym
- 05 Outdoor Sit-out
- 06 Multi-purpose Lawn
- 07 Multi-purpose Play court
- 08 Pedestrian Entry to Central Greens

## Podium Level

- 09 Sit-out for Elderly
- 10 Walkway
- 11 Pebble Seating
- 12 Zen Garden
- 13 Club Entrance
- 14 Swimming Pool
- 15 Kids' Pool
- 16 Water Feature with fountains
- 17 Pool side Deck
- 18 Semi-covered walkway
- 19 Seating by the Water Feature
- 20 Badminton Courts
- 21 Squash Court
- 22 Yoga/Meditation Lawn
- 23 Outdoor Working Pod
- 24 Kids' Play Area

## Club Terrace

- 25 Barbeque Counter
- 26 Terrace Lawn
- 27 Bonfire area with Sit-out
- 28 Skating Rink
- 29 Lawn

## Services

- 30 DG
- 31 STP
- 32 Sub-station





# 21,000+ SQ. FT. PALM RESORT CLUBHOUSE



**LET FUN-TIMES BE YOUR CONSTANT COMPANION  
AT THE RESORT-THEMED CLUBHOUSE**



**MINI BOWLING ALLEY**



**SKATING RING**



**BADMINTON COURTS**

**LET TRANQUILITY BE YOUR CONSTANT COMPANION AT  
THE RESORT-THEMED CLUBHOUSE**



**LET PLAYTIME BE YOUR KIDS' FOREVER COMPANION  
AT THE RESORT-THEMED CLUBHOUSE**

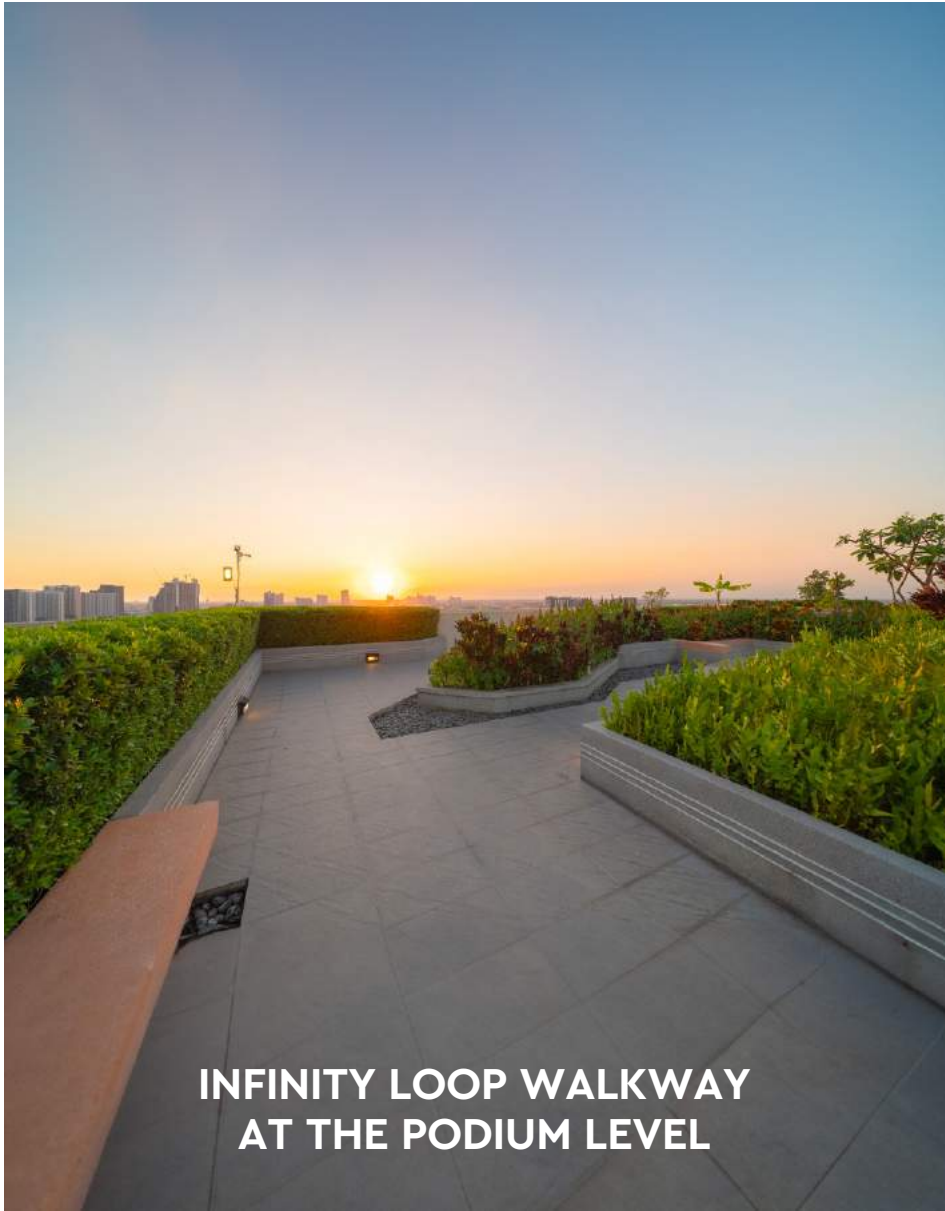


**KIDS' PLAY AREA**



**MULTI-PURPOSE COURT**

**MAKE HEALTH & FITNESS YOUR CONSTANT COMPANION  
AT THE RESORT-THEMED CLUBHOUSE**



**INFINITY LOOP WALKWAY  
AT THE PODIUM LEVEL**



**POOLSIDE YOGA & MEDITATION DECK**



**OPEN GYM**

# RETAIL CONVENIENCE AT YOUR DOORSTEP - PREMIUM RETAIL SHOPS



Artist's impression and not actual site image. This is for informational purposes only.



TAIL

RETAIL

RETAIL

RETAIL

Artist's impression and not actual site image. This is for representational purposes only.

**2.5+ ACRES LUSH GREENERY**





**MOST LOVED PRODUCT**

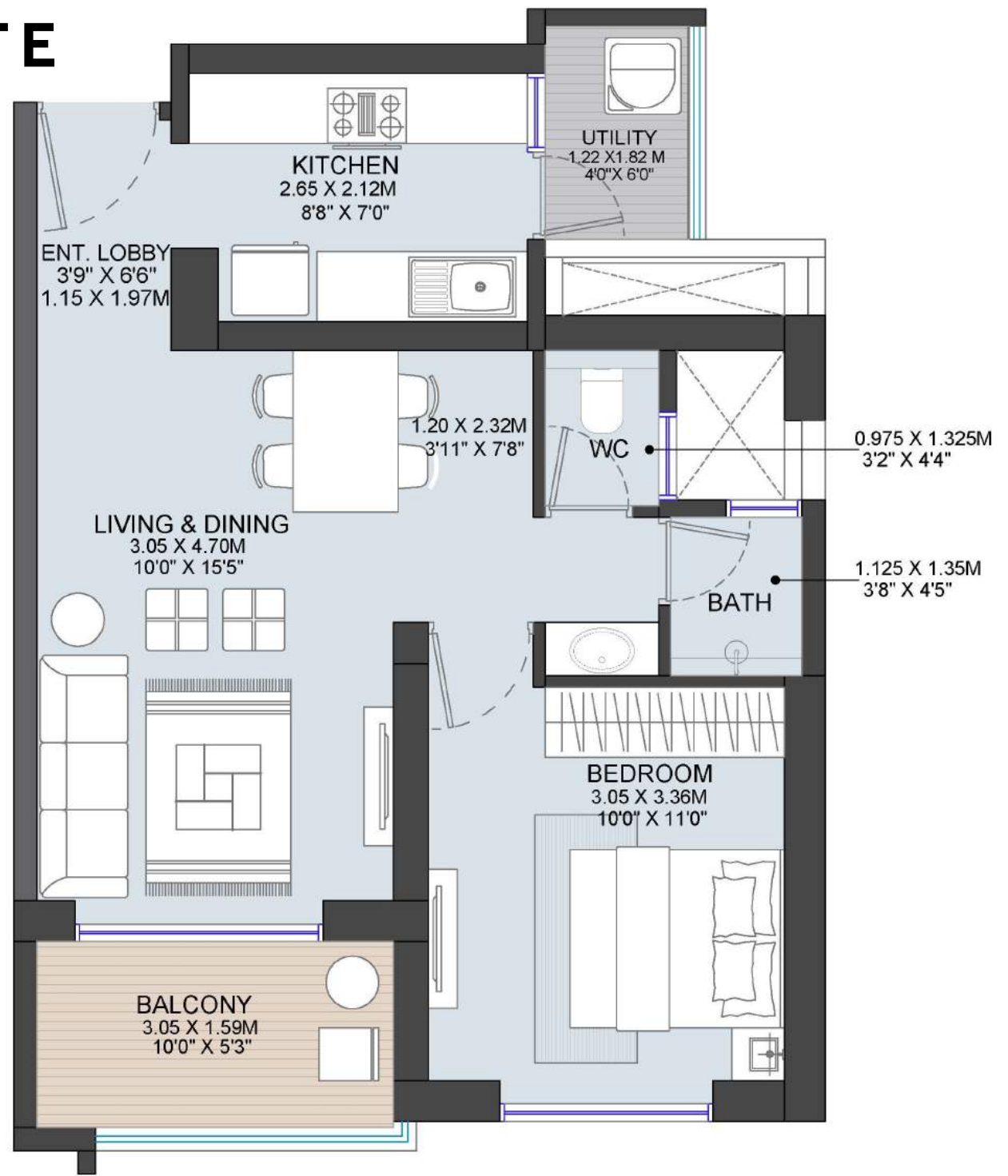
**AT**

**HINJEWADI PHASE 1**

**PRESIDENTIAL SUITES**

# PRESIDENTIAL SUITE

## 1 BHK



TYPE	CARPET AREA (SQ.M.)	BALCONY (SQ.M.)	DRY BALCONY (SQ.M.)	TOTAL RERA (SQ.M.)	TOTAL RERA (SQ.FT.)
1 BHK	45.17	4.85	2.18	52.19	562

# ENJOY A STATE-OF-THE-ART LIFE FITTED WITH THE FINEST



**AIR CONDITIONER**



**BED WITH MATTRESS**



**SOFA & COFFEE TABLE**



**MODULAR KITCHEN**



**REFRIGERATOR**



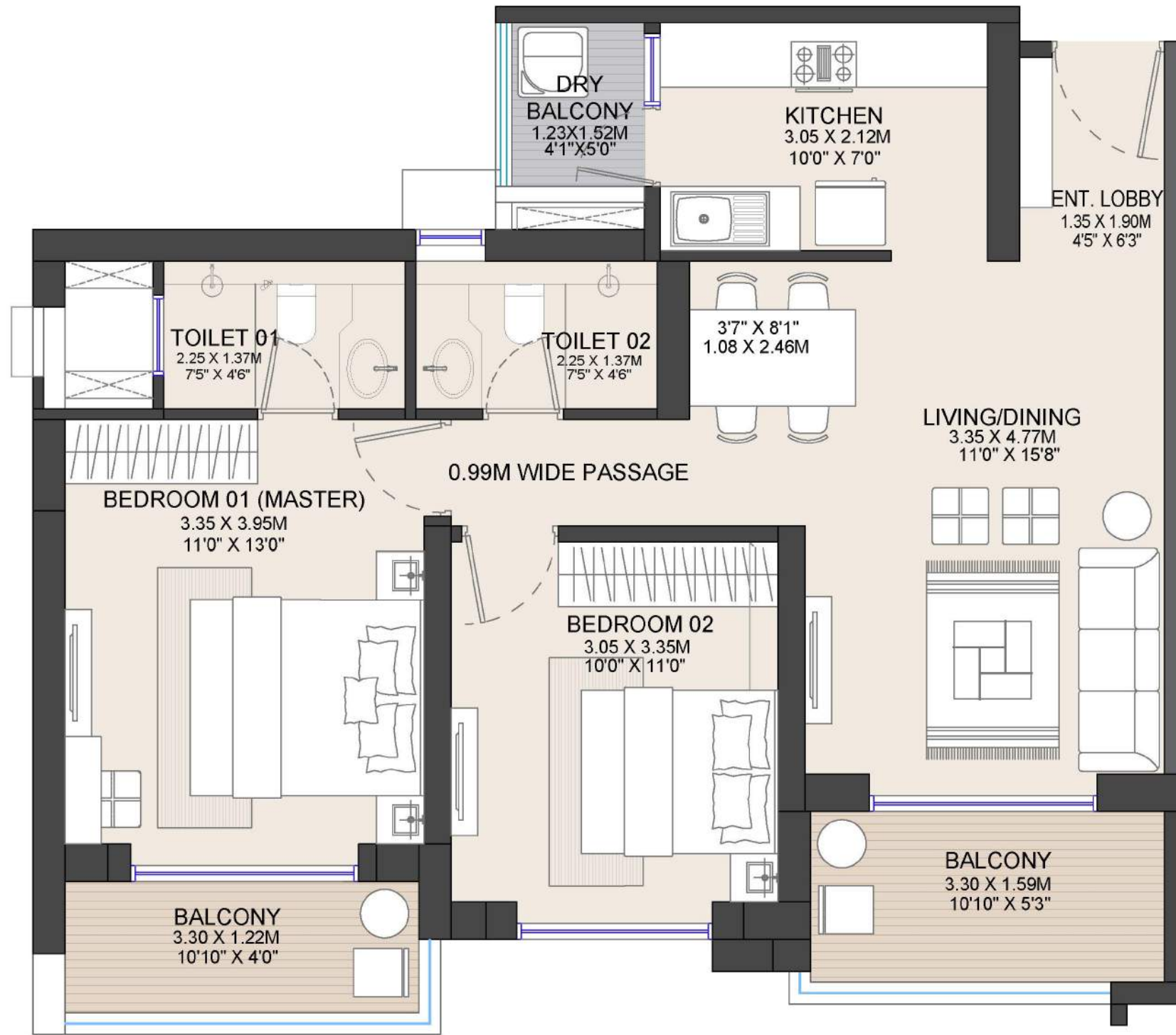
**WASHING MACHINE**



**WARDROBE**

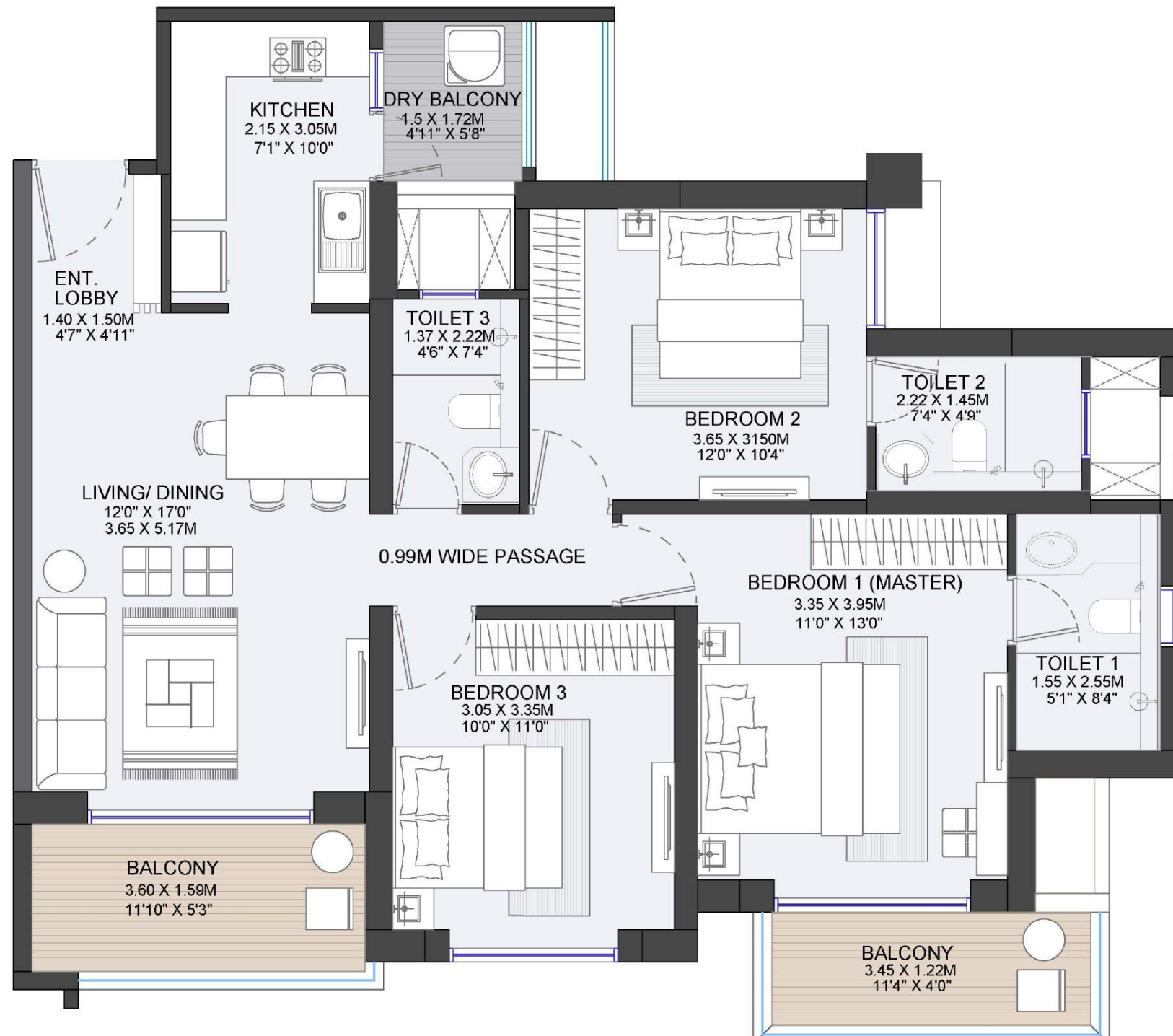
**PRESENTING**  
**EXPANSIVE 2 & 3 BHK HOMES**

# 2 BHK



TYPE	CARPET AREA (SQ.M.)	BALCONY (SQ.M.)	DRY BALCONY (SQ.M.)	TOTAL RERA (SQ.M.)	TOTAL RERA (SQ.FT.)
2 BHK	67.06	9.29	1.88	78.23	842

# 3 BHK



TYPE	CARPET AREA (SQ.M.)	BALCONY (SQ.M.)	DRY BALCONY (SQ.M.)	TOTAL RERA (SQ.M.)	TOTAL RERA (SQ.FT.)
3 BHK	84.16	9.95	2.59	96.70	1041

# SPECIAL FEATURES



**HOB**



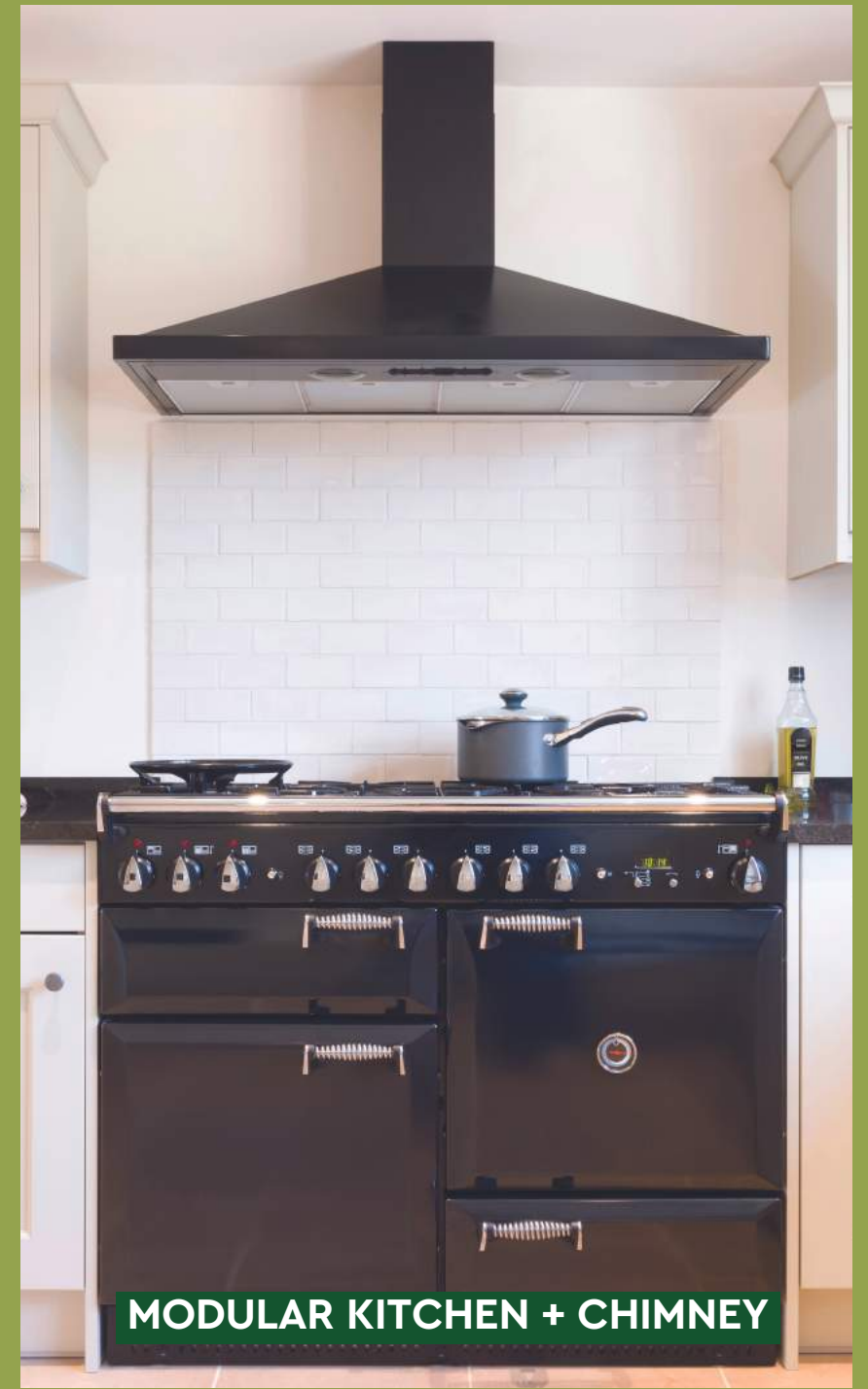
**AIR CONDITIONER IN MASTER BEDROOM**



**DIGITAL DOOR LOCK**



**VIDEO DOOR PHONE**



**MODULAR KITCHEN + CHIMNEY**



**INTRODUCING LIMITED**

**2+1 BHKs (JODI)**

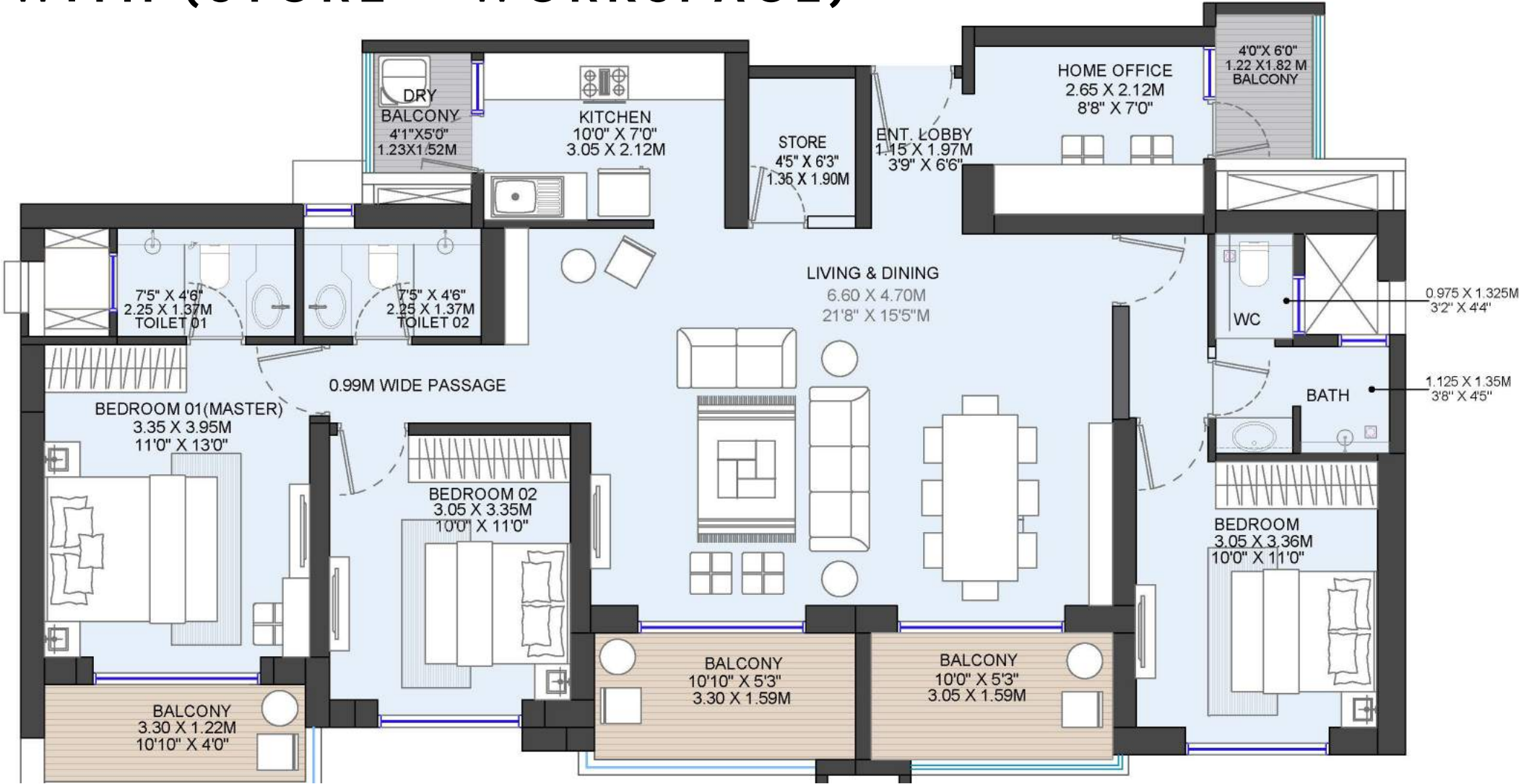
**50**

**UNITS ONLY**

# 2+1 BHKs (JODI)

## 3 BHK XL WITH (STORE + WORKSPACE)

- 2 CAR PARK
- PRESIDENTIAL SUITE
- CHINMEY HOB,
- DIGITAL DOOR LOCK & VIDEO DOOR PHONE



TYPE	CARPET AREA (SQ.M.)	BALCONY (SQ.M.)	DRY BALCONY (SQ.M.)	TOTAL RERA (SQ.M.)	TOTAL RERA (SQ.FT.)
2 BHK + 1BHK	112.23	14.14	4.06	130.43	1404

**INTRODUCING LIMITED**

**2+2 BHKs (JODI)**

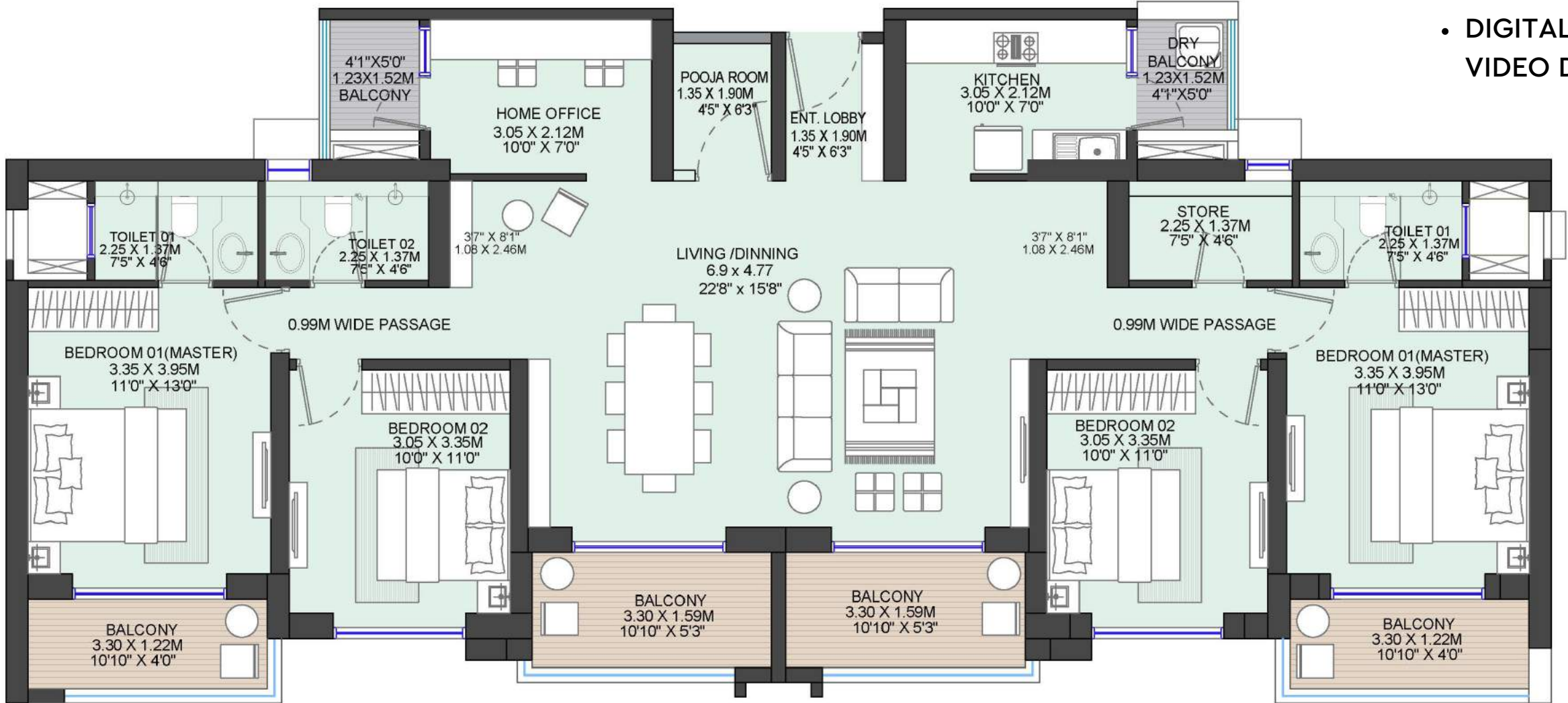
**25**

**UNITS ONLY**

# 2+2 BHKs (JODI)

## 4 BHK XL WITH (GUEST ROOM+WORK SPACE+ POOJA ROOM+ STORE)

- 2 CAR PARK
- CHINMEY HOB
- MODULAR KITCHEN
- DIGITAL DOOR LOCK & VIDEO DOOR PHONE



TYPE	CARPET AREA (SQ.M.)	BALCONY (SQ.M.)	DRY BALCONY (SQ.M.)	TOTAL RERA (SQ.M.)	TOTAL RERA (SQ.FT.)
<b>2 BHK + 2BHK</b>	134.12	18.58	3.76	156.46	1684

INTRODUCING LIMITED

3+2 BHKs (JODI)

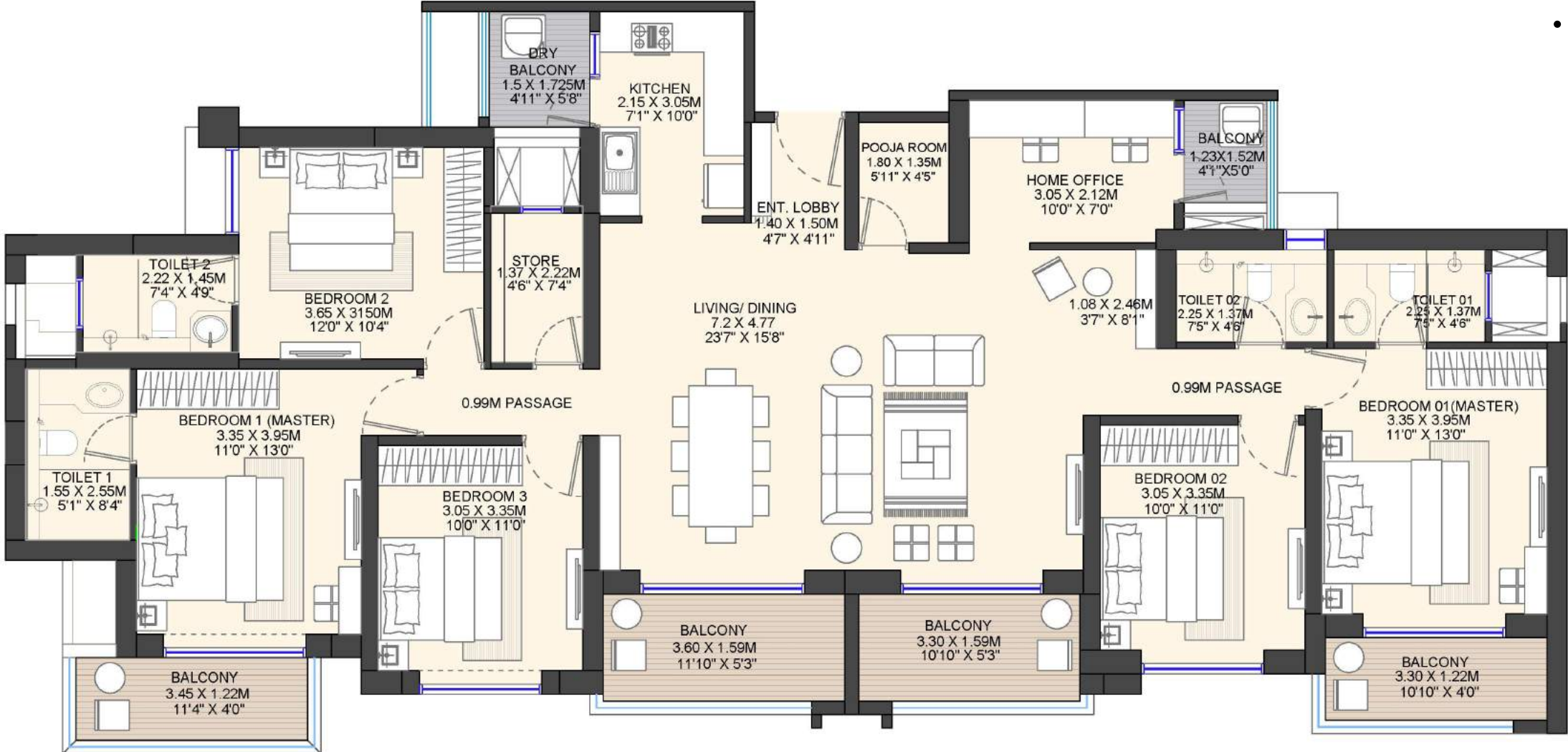
25

UNITS ONLY

# 3+2 BHKs (JODI)

5 BHK XL WITH (GUEST ROOM+ WORK SPACE+ POOJA ROOM+ STORE ROOM)

- 2 CAR PARK
- CHINMEY HOB
- MODULAR KITCHEN
- DIGITAL DOOR LOCK & VIDEO DOOR PHONE



TYPE	CARPET AREA (SQ.M.)	BALCONY (SQ.M.)	DRY BALCONY (SQ.M.)	TOTAL RERA (SQ.M.)	TOTAL RERA (SQ.FT.)
<b>3 BHK + 2BHK</b>	151.22	19.24	4.47	174.93	1883

# PAYMENT PLANS

# CONSTRUCTION LINKED PLAN

MILESTONE	% DUE
ON BOOKING	5.50%
WITHIN 15 DAYS OF BOOKING	4.50%
WITHIN 45 DAYS OF BOOKING	10.00%
ON COMPLETION OF EXCAVATION	10.00%
ON COMPLETION OF FIRST SLAB OF BASEMENT	10.00%
ON COMPLETION OF PLINTH	5.00%
ON COMPLETION OF LEVEL 2	5.00%
ON COMPLETION OF LEVEL 8	5.00%
ON COMPLETION OF LEVEL 16	5.00%
ON COMPLETION OF LEVEL 24	5.00%
ON COMPLETION OF SUPERSTRUCTURE	5.00%
ON COMPLETION OF WALLS	5.00%
ON COMPLETION OF STAIRCASE	5.00%
ON COMPLETION OF SANITARY FITTINGS	5.00%
ON APPLICATION OF OC	10.00%
ON NOTICE OF POSSESSION	5.00%



**ALL FLOORS AT THE SAME PRICE**

## TYOLOGY

## AVAILABILITY

## AREA IN SQ.FT.

## CITY VIEW PRICE STARTING FROM

## GARDEN VIEW PRICE STARTING FROM

1 BHK

100 UNITS

562 SQ.FT.

₹67 L.

₹68 L.

2 BHK

300 UNITS

842 SQ.FT.

₹1 CR.

₹1.02 CR.

3 BHK

250 UNITS

1041 SQ.FT.

₹1.28 CR.

₹1.3 CR.

3 BHK XL  
(2+1)

50 UNITS

1404 SQ.FT.

₹1.67 CR.

₹1.70 CR.

4 BHK (2+2)

25 UNITS

1684 SQ.FT.

₹2 CR.

₹2.04 CR.

5 BHK (2+3)

25 UNITS

1883 SQ.FT.

₹2.28 CR.

₹2.32 CR.

# TOKEN AMOUNT

1 BHKs

50,000/-

2BHKs / 3BHKs

1,00,000/-

# LAUNCH BENEFIT

2,000,000/-

**ADDITIONAL  
EARLY-BIRD BENEFIT**

**1,000,000/-**

**VALID ONLY TILL 25<sup>TH</sup> FEBRUARY, 2024**

LOOKING FORWARD TO MEET YOU  
AT

# GODREJ EXPERIENCE GALLERIA

Preferred Marketing Partner



Call Us:- +91 92810 91872

[www.propbuynsell.com](http://www.propbuynsell.com)